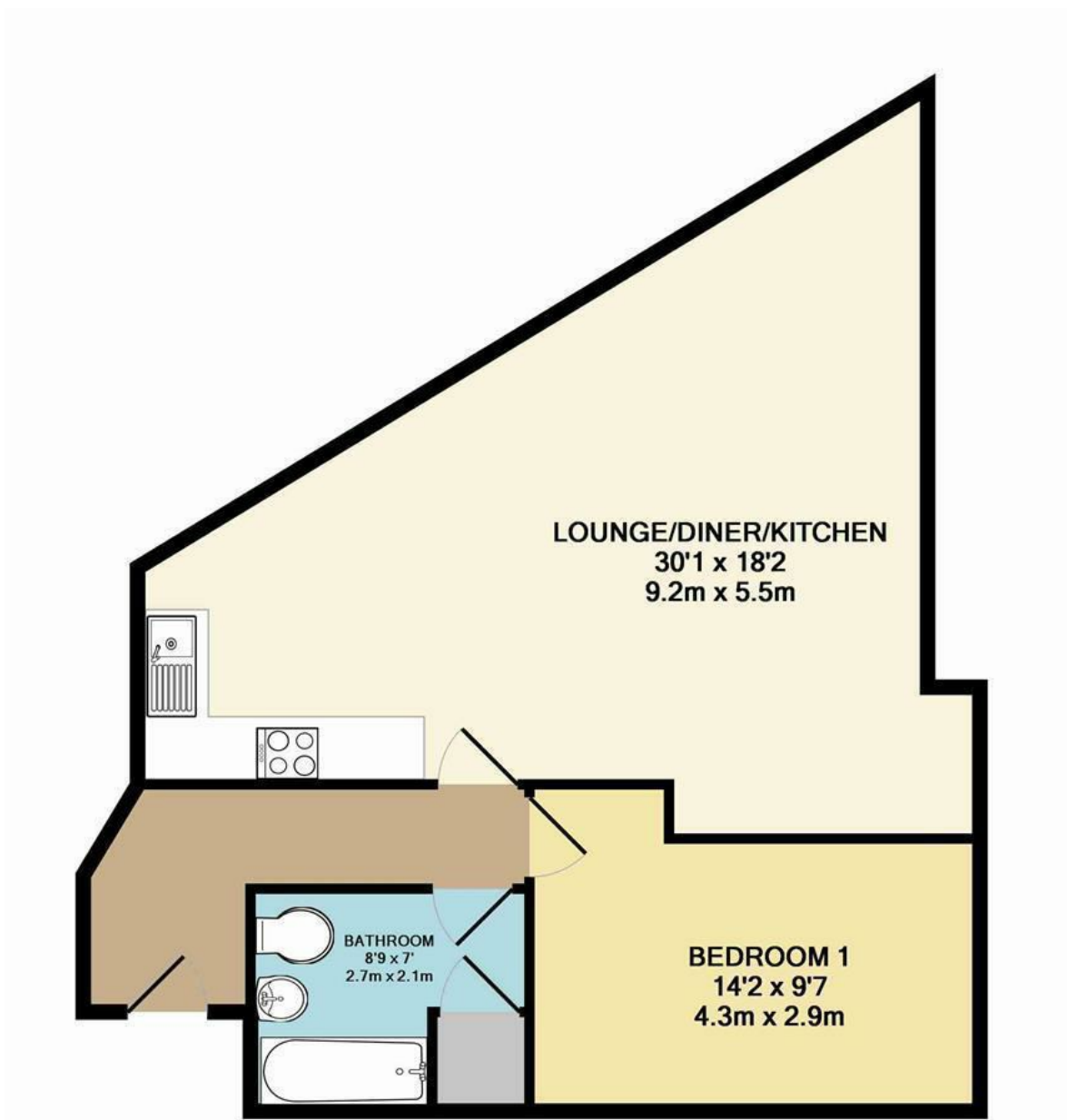




Paper Mill Yard | Norwich | NR1
 Guide Price £180,000

abbotFox



Whilst every attempt has been made to ensure the accuracy of the floor plan contained here, measurements of doors, windows, rooms and any other items are approximate and no responsibility is taken for any error, omission, or mis-statement. This plan is for illustrative purposes only and should be used as such by any prospective purchaser. The services, systems and appliances shown have not been tested and no guarantee as to their operability or efficiency can be given
 Made with Metropix ©2016

Energy Efficiency Rating		
	Current	Potential
Very energy efficient - lower running costs		
(92 plus) A		
(81-91) B		
(69-80) C		
(55-68) D		
(39-54) E		
(21-38) F		
(1-20) G		
Not energy efficient - higher running costs		
England & Wales	EU Directive 2002/91/EC	

Disclaimer – In accordance with the Property Misdescriptions Act, the company gives notice that all descriptions, references to condition, necessary permissions for use and other details are given in good faith and believed to be correct, but any intending lessees do not rely on them as statements of fact, but must satisfy themselves by inspection or other means, as to their accuracy.

The logo for AbbotFox, featuring the word "abbot" in white and "Fox" in orange, set against a dark blue square background.

abbotFox

abbotFox presents this spacious apartment, overlooking the River Wensum. An ideal opportunity for any first time buyer or buy-to-let investor, this property has been exceptionally well maintained and provides generous open plan living accommodation, double bedroom, bathroom and benefits from secure allocated parking. An internal viewing comes highly recommended.

Full photography to follow.